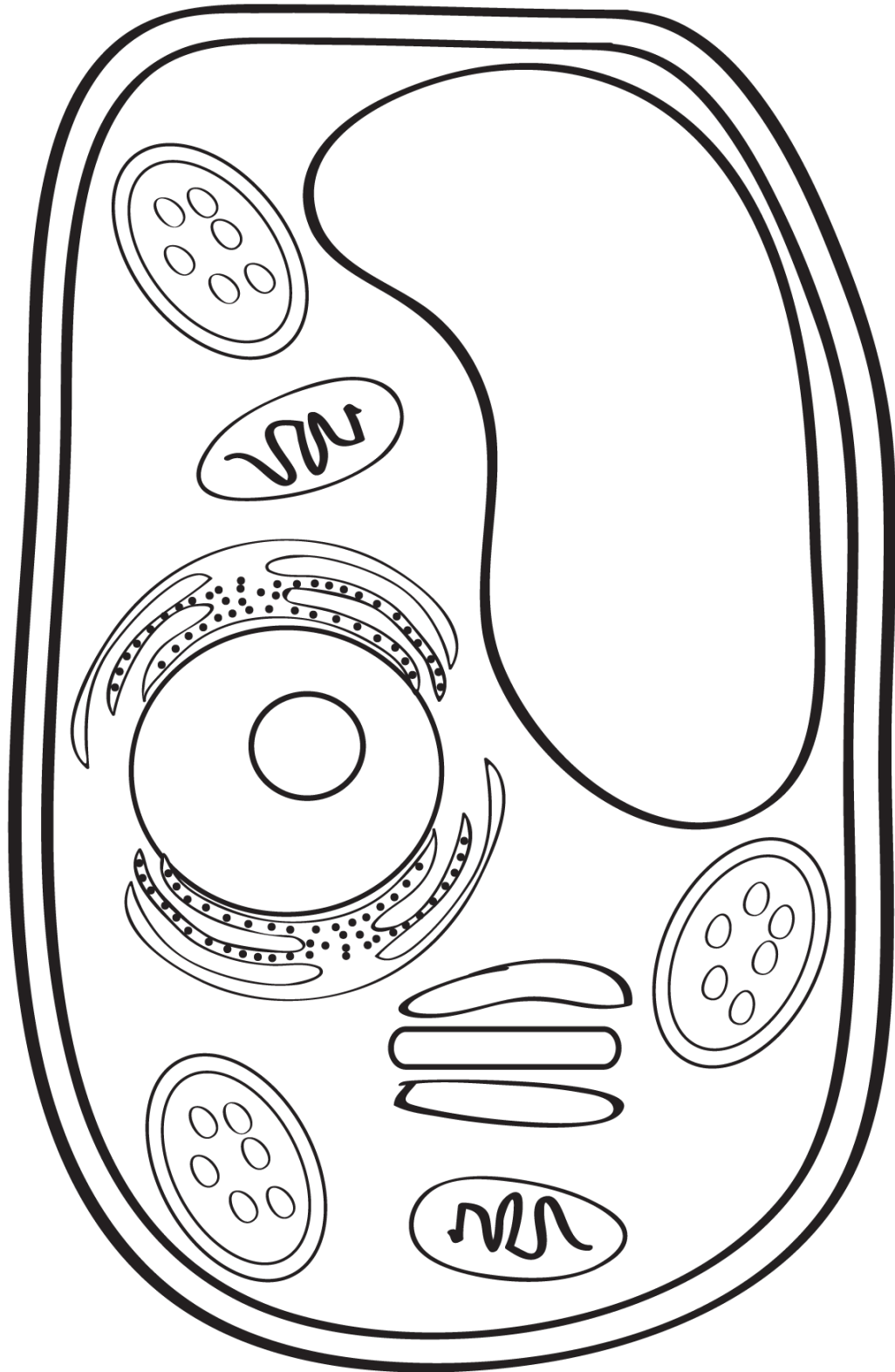
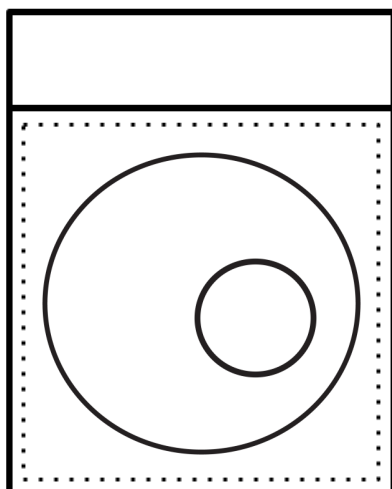
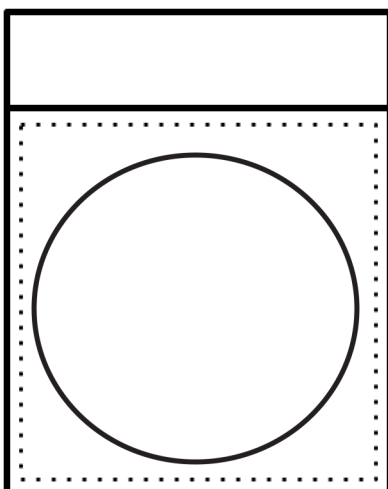
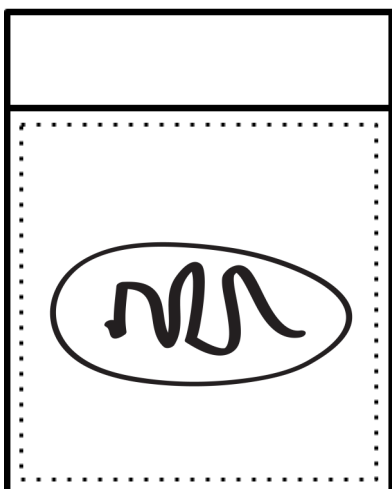
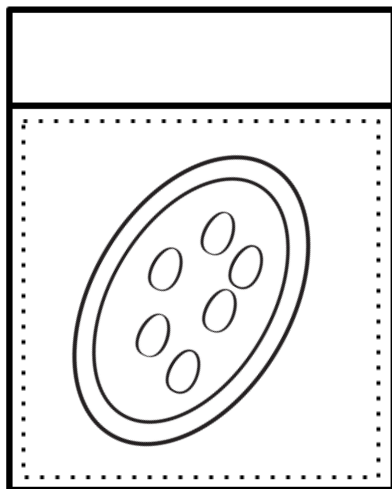
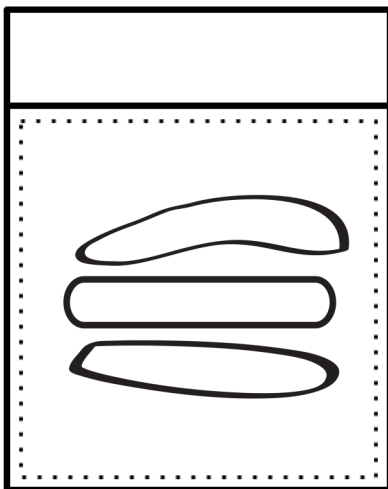
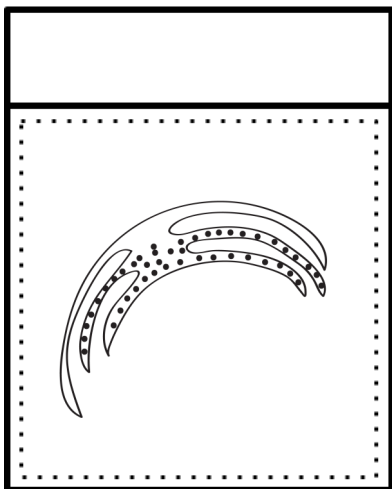
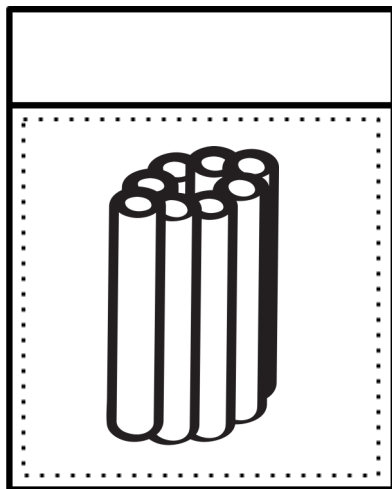
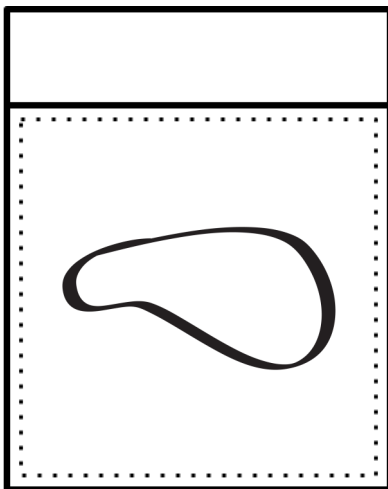
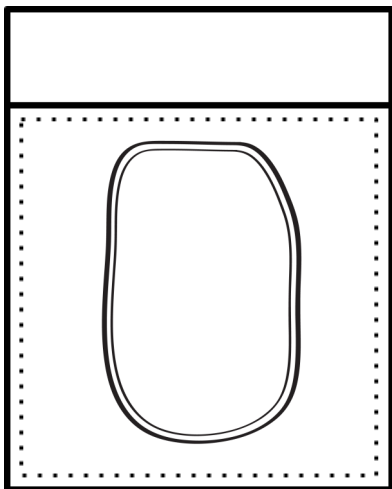


# Plant Cells





<b>Cell Wall, Membrane &amp; Cytoplasm</b>	<b>Vacuole</b>	<b>Centrioles</b>
<b>ER and Ribosomes</b>	<b>Golgi Bodies</b>	<b>Chloroplasts</b>
<b>Mitochondria</b>	<b>Nucleus</b>	<b>Nucleolus</b>

**Directions:**

**Color the cell diagram on page one.**

**On page two, color each organelle (be sure to make the colors match those on the first page, so you can easily identify them on the flip chart)**

**On page three, define the functions of each organelle.**

**On a piece of card stock, assemble the flip book. Glue the cover page (with the complete cell) on first. Open the layer, and underneath, glue the tabs of the organelle flip book. Under that, glue the definitions.**

**Use the flip book to help you memorize the organelles and their functions.**